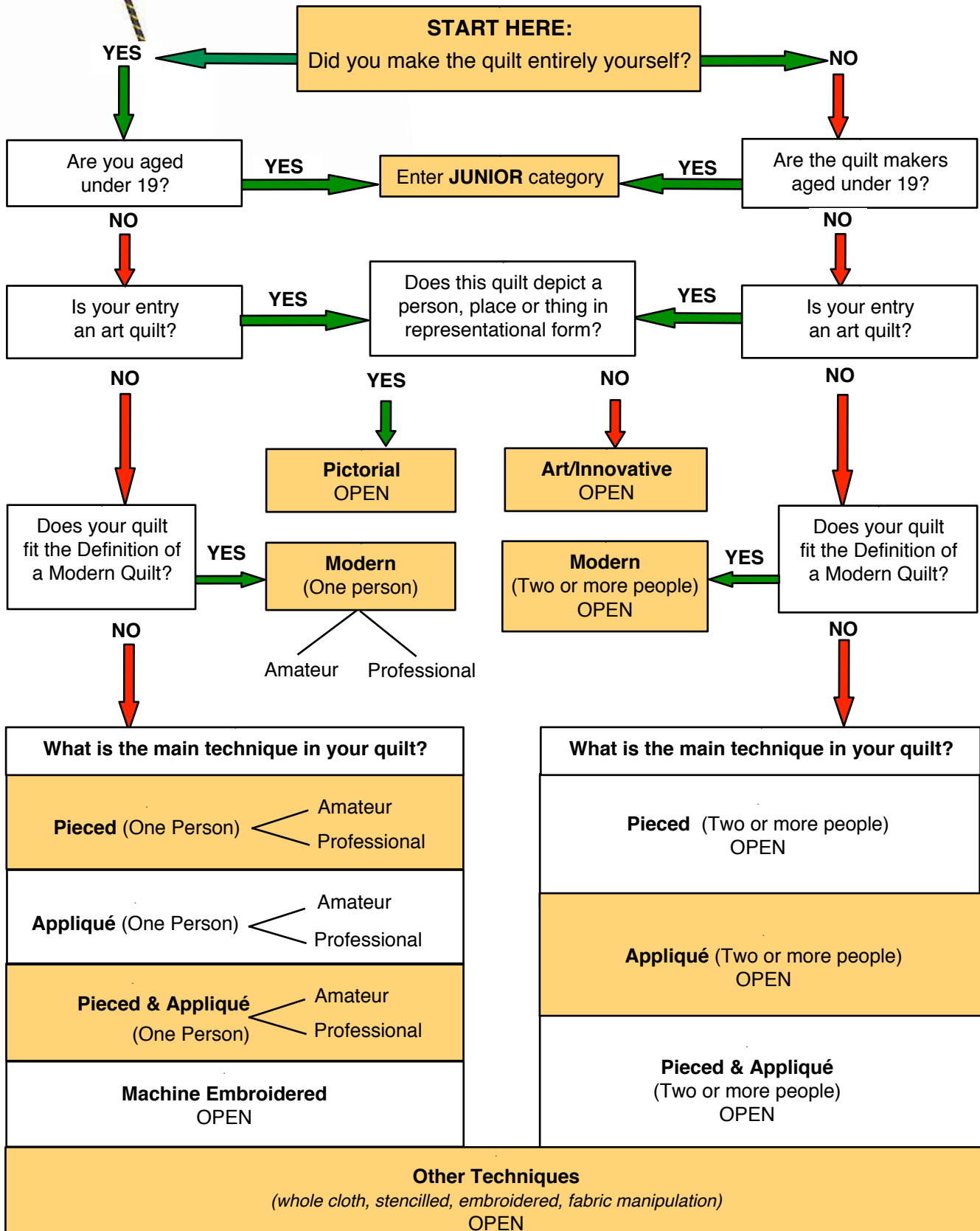




# Enter the 2021 Festival of Quilts!



This flow chart will help you choose the category to enter.  
(For definitions: please refer to the Guidelines document.)



## 2021 FESTIVAL OF QUILTS CATEGORIES

| CATEGORY                                 | STATUS |   | REQUIRED FEATURES OF THE ENTRY  |
|--|--------|---|---|
| Pieced – One person                      | A      | P | For predominantly pieced quilts including traditional blocks, geometric, improvisational, foundation and English paper piecing, hand and/or machine pieced and quilted.<br><i>No side to exceed 290cm</i>   |
| Appliqué – One person                    | A      | P | Predominantly hand or machine appliqué, with no minimum requirement for the extent of coverage of the quilt top by appliqué.<br><i>No side to exceed 290cm</i>  |
| Pieced and Appliqué – One person         | A      | P | Quilts using a combination of piecing and appliqué.<br><i>No side to exceed 290cm</i>   |
| Modern – One person                      | A      | P | Must feature one or more of the following characteristics: bold colours and prints, high contrast and areas of solid colour, minimalism, improvisational piecing, expansive negative space, reinterpreted traditional design, non-traditional layouts and asymmetry.<br><i>No side to exceed 290cm</i>  |
| Modern – Two or more people              | OPEN   |   |   |
| Pieced – Two or more people              | OPEN   |   | Created by two or more people. For predominantly pieced quilts including traditional blocks, geometric, improvisational, foundation and English paper piecing, hand and/or machine pieced and quilted.<br><i>No side to exceed 290cm</i>  |
| Appliqué – Two or more people            | OPEN   |   | Created by two or more people. Predominantly hand or machine appliqué, with no minimum requirement for the extent of coverage of the quilt top by appliqué.<br><i>No side to exceed 290cm</i>   |
| Pieced and Appliqué – Two or more people | OPEN   |   | Created by two or more people. Quilts using a combination of piecing and appliqué.<br><i>No side to exceed 290cm</i>  |
| Machine Embroidered – One Person         | OPEN   |   | Machine embroidery must be the dominant design feature and embroidered and quilted by the entrant.<br><i>No side to exceed 290cm</i>  |
| Other Techniques                         | OPEN   |   | For example whole cloth, trapunto, stencilling, embroidery, fabric manipulation. <b>Can be a work created by two or more people.</b><br><i>No side to exceed 290cm</i>  |
| Art/Innovative                           | OPEN   |   | An original design. Made as an expression of art: should be an original, non-traditional design reflecting innovative construction and design techniques, theme or subject matter and/or materials, eg. painting, printmaking, photography, graphic design, dyeing, textile designs, beads, crayons, embellishments, embroidery, lace and fibres. Must be made of fabric, have 3 layers and incorporate quilting. <b>Can be a collaborative work. Please refer to Condition of Entry #18.</b><br><i>No side to exceed 290cm</i> |
| Pictorial                                | OPEN   |   | An original design portraying a recognisable person, place or thing. <b>Can be a collaborative work. Please refer to Condition of Entry #18.</b><br><i>No side to exceed 290cm</i>  |
| Junior                                   | OPEN   |   | Any technique created by a Junior up to 18 years. Please refer to Conditions of Entry # 1 and # 4 for requirements.<br><i>No side to exceed 290cm</i>   |
| Challenge:<br><i>Masquerade</i>          | OPEN   |   | Any technique inspired by and created to fit the theme. Must be made of fabric, have 3 layers and contain quilting but can be embellished or enhanced with other materials.<br><i>No side to exceed 100cm</i>   |

**A = Amateur**

**P = Professional**

*The following categories may be separated into "Small" and "Large" sub-categories, subject to the number of entries: Pieced, Appliqué and Pieced & Appliqué. Size will be determined by the Festival of Quilts Committee after entries close.*

*The Festival of Quilts Committee reserves the right to make modifications in any particular category prior to judging.*